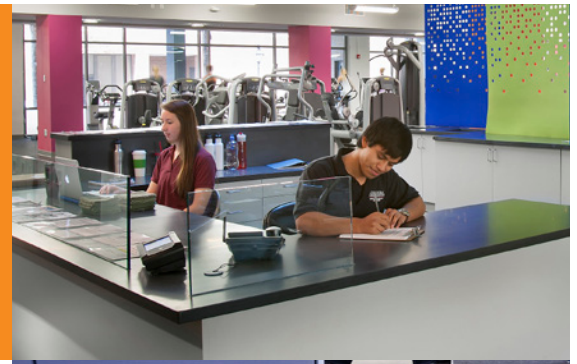


Product Sales Sheet

# Roster

Roster features a unique non-woven surface that is fusion bonded to a 5mm base layer and is offered in an interlocking format. This product is ideal for entryways or transition areas where traffic is focused.



## Markets

- Fitness
- Sports
- Student Rec

## Applications

- Entrances
- Common Areas
- Offices

## Benefits

- Durable
- Portable
- Provides moisture mitigation
- Easy to install



## Product Options

**Size:**

Available as a standard in tiles.  
Talk to your local agent to determine availability, pricing, minimums, and lead times.

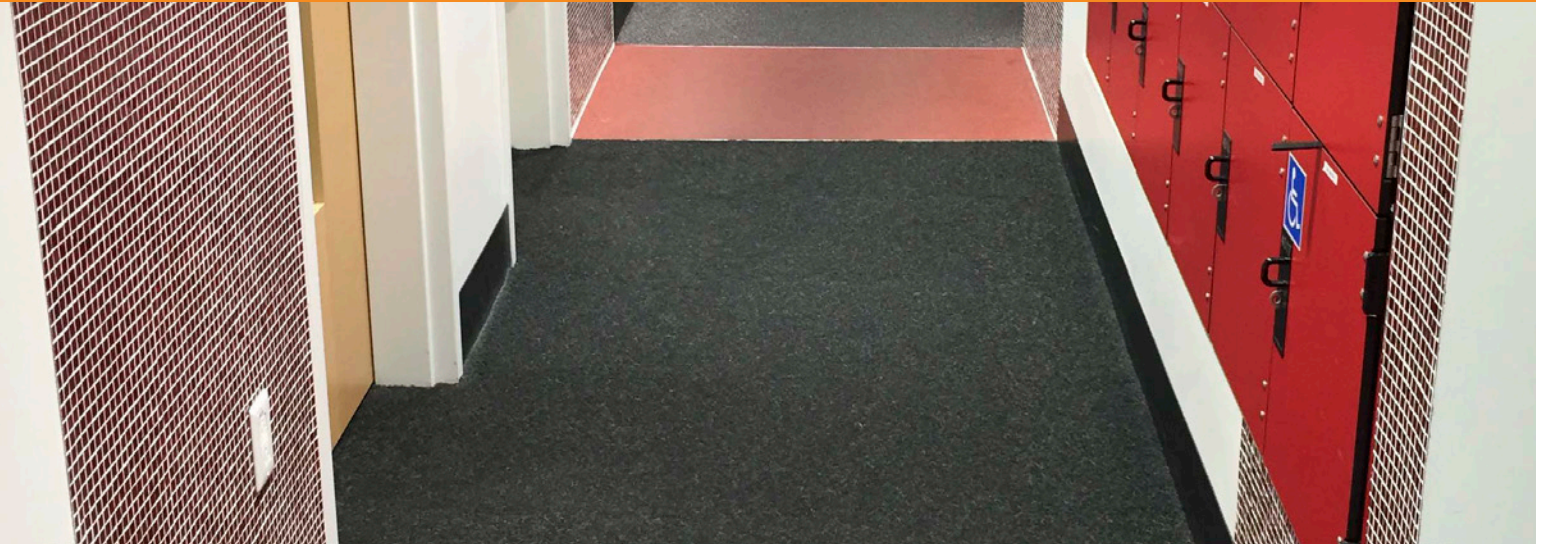


7mm (2mm+5mm) x 23" (58cm)  
x 23" (58cm)

**Color Options:**

• See website for colors.





## Technical Details

Performance Criteria	Test Standard	Typical Results
Electrostatic Propensity	AATC Test Method 134	-0.8kv, max.
Carpet Hot Water Extraction	AATC Test Method 171	No change
Color Fastness to Light	AATC Test Method 16E	No change
Color Fastness to Water	AATC Test Method 107	No change
Color Fastness to Shampoo	AATC Test Method 138	No change
Color Fastness to Rubbing	AATC Test Method 165	No change
Stain Resistance	AATC Test Method 175	No staining
Coefficient of Friction	ASTM C1028	0.7, Wet & Dry
Surface Flammability	ASTM D2859	Pass
Aachen Dimensional Stability	ASTM 2551/ITTS 104	MD=+0.06%, AMD = -0.63%



62.8%

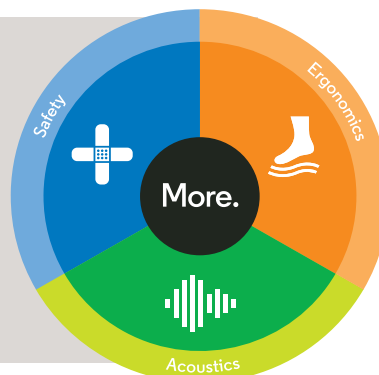
**Force Reduction**  
Absorption of impact energy



19.1%

**Energy Restitution**  
Useful return of impact energy

Values based on Deltec Test



Can a floor  
do more?  
Yes.